

## INSTALLATION INSTRUCTIONS

DESCRIPTION: GYTR Radiator Fan Kit  
PART NUMBER: BNL-E24E0-V0  
MODEL: 2024 YZ450FX



### ⚠ WARNING

Please read and understand these instructions completely before installation to avoid possible injury, or damage to the accessory or vehicle.

### NOTICE:

Installation of this kit requires a torque wrench and should be performed by an authorized Yamaha dealer or a qualified mechanic. -

### WARRANTY INFORMATION:

In the United States, contact your dealer of purchase for information, fitment advice and a copy of the Yamaha Genuine Parts and Accessories Limited Warranty for this accessory. -

### DEALER OR INSTALLER:

These instructions contain important information for future reference and *must* be given to the customer. -

### PARTS LIST:

No.	Part Number	Description	Qty
--	<b>BHR-E24E0-V0</b>	Radiator Fan Kit	
①	*	Fan Assembly	1
②	5SL-12671-00	M6 Clip Nut	3
③	2GB-12615-00	M6x14 Captive Washer Phillips Hex Head Bolt	3

\* Part supplied with kit only and not available separately.

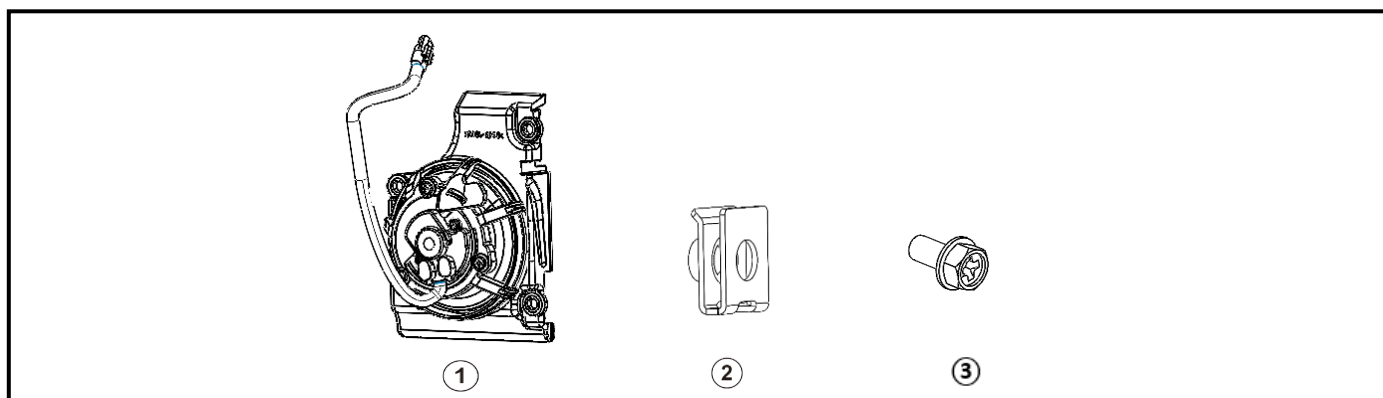
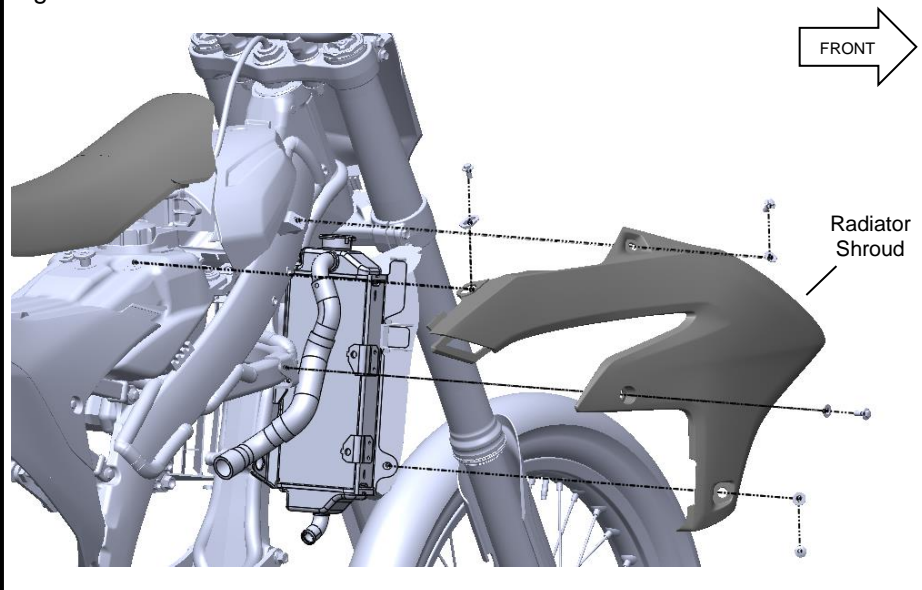


Fig. 1



### PREPARATION: -

1. Place the vehicle on a secure and level surface.
2. Clean the mounting surfaces before beginning installation.

### Installation:

1. Remove the rider's seat (refer to owner's manual for this process)
2. Remove the right-side radiator shroud and retain the hardware, as shown in Fig. 1.
3. Install ① Radiator Fan with ② M6 Clip Nut and ③ M6 Bolts as shown in Fig. 2.

Fig. 2

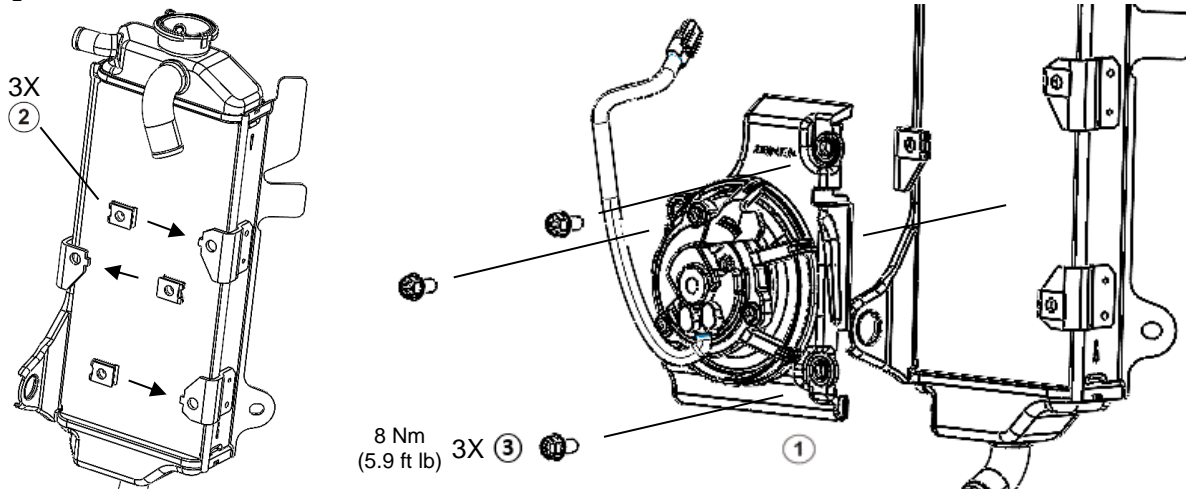
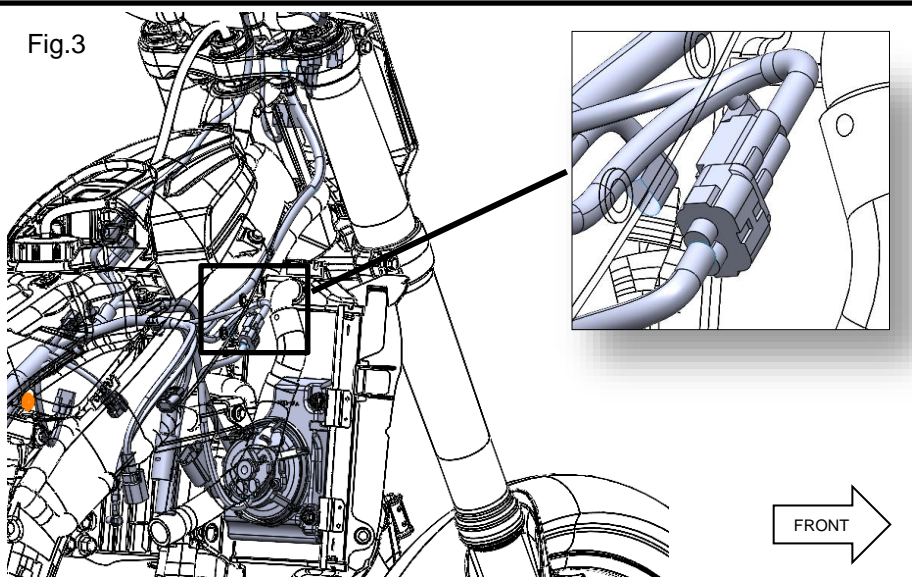


Fig. 3



4. Connect the fan cable to the power connector as shown in Fig. 3.

**Note:** Route and secure the cable so that it does not contact the fan or any hot surfaces.

5. Install right side radiator shroud as shown in Fig. 4.

**MAINTENANCE:**

Periodically, check torque on all hardware. If loose hardware is found, re-torque to specification.

**CARE AND CLEANING:**

Clean metal parts with a clean, soft cloth and mild soap and water solution. Rinse and dry.

**CUSTOMER SERVICE:**

For further information see your Yamaha dealer.

**ESTIMATED TIME TO INSTALL: 0.5 HRS.**

Fig. 4

